

SERVING THE CONCRETE PUMPING
AND PILING INDUSTRY SINCE 1984

P **PREMIER**
PIPELINE LTD
INNOVATION, SAFETY AND SERVICE

Issue: March 2024



PREMIER-PIPELINE.CO.UK
Tel: 0118 934 3999



CONTENTS

Introduction	Page 3
IVG Construction Hoses	Page 4 - 5
IVG Planet + Construction Hoses	Page 6 - 7
Hose Protective Coverings	Page 8
Lay-Flat Safety Hose	Page 8
Hose Ramps	Page 8
Premier Pipeline Anti-Kink Hose Spring	Page 8
ST52 Pipes	Page 9
Steel and Cast Elbows	Page 10
HB400 Delivery Lines	Page 11
Wear-Resistant Delivery Lines	Page 12
Wear-Resistant Elbows	Page 13
Supports for Pipes and Hoses	Page 14
Pipeline Design	Page 15
Welding Rings and Gaskets	Page 16
Auger Bungs, Teeth and Pins	Page 16
Nozzles for Shotcreting	Page 16
Couplings, Cleaning Sponges and Accessories	Page 17
Ultrasonic Thickness Gauges	Page 18
DLV Hydraulic Vertical Diverter Valve	Page 18
Manual Shut Off Valves	Page 18
DLV Hydraulic Vertical Diverter Valve	Page 19
DLZ Hydraulic Horizontal Diverter Valve	Page 19
DLO Hydraulic Horizontal Diverter Valve 5/2	Page 19
DLI Manual Hydraulic Horizontal Diverter Valve 3/2	Page 20
Manual Vertical Hydraulic Shut Off Valve	Page 20
High Pressure Horizontal Hydraulic Shut Off Valve	Page 21
Hydraulic Power Pack	Page 21
Delta Washout Bags	Page 22
Delta Washout Pan	Page 22
Hose Re-ending and Pressure Testing	Page 23
Prime-a-Pump	Page 23
Contact Details	Page 24

Premier Pipeline supplies the construction industry with high quality pipeline and accessories for all concrete pumping applications, including screed and grout pumping, piling and formwork.

As the sole UK dealer for IVG concrete, grout and screed hoses, Prime-a-Pump concrete pump primer and Dalcom's range of steel pipeline and accessories, we are proud to offer an unbeatable range of products and services to our customers.

Based in Maidenhead, Berkshire, our dedicated team thrive on providing the best customer experience, working tirelessly to deliver excellence quickly, efficiently and safely. Since our inception in 1984, quality and innovation have formed the backbone of our business with the aim of continuously offering the latest technological developments. From our range of **Delta concrete products** to our **Premier Safety Hose**, **Oslo protective hose coverings** and our **award-winning Anti-kink Hose Spring**, our collaborations with customers and suppliers can be found on sites all over the world.

As we look to the future, our mission is clear:

"To offer an industry-leading range of quality concrete products and services to a growing, global customer base whilst upholding the highest moral and ethical standards."





GROUT AND SCREED PUMPING HOSE: ABR NIAGARA

This hose is widely used to pump grout but was also engineered for the spraying of plaster, gypsum and concrete, with a heavy-duty construction which resists kinking.

Grout and Screed hose available in 20 BAR W.P. and 40 BAR W.P.

Application: Mandrel built rubber hose for the spraying of plaster, grout, gypsum and concrete.

Temperature Range: -40°C (-40°F) to +70°C (+158°F).

Tube: Black, smooth, specially compounded for superior resistance to abrasion.

Reinforcement: High strength synthetic cord.

Cover: Black, smooth (wrapped finish) abrasion, weather and ozone resistant synthetic rubber.

Coils: All lengths available up to 120m.

SHOTCRETE PUMPING HOSE: PREMIER SCR 85 BAR

This hose is suited for high-pressure applications including Shotcrete, as well as concrete pumping when a lightweight hose is required.



IVG Colbachini is an Italian company that produces rigid mandrel built rubber hoses that meet the needs of different sectors: oil and gas, construction, chemical, dredging, metallurgical, railway and naval.

These hoses can reach continuous lengths of up to 120m and can be supplied with any type of coupling. They are suitable to convey concrete, plaster, grout, sand and gypsum and can be used with sand blasting or plaster machinery.

They are available with working pressures of up to 100 bar (1500 psi). Fifty years of hard work have built a strong international reputation for IVG. They are supported by a global network and have a presence in more than one hundred countries worldwide, with five international branches. IVG's quality system is ISO 9001 certified.

ABR NIAGARA/20

code	inside diameter		outside diameter		working pressure		burst pressure		weight nominal		length max	
	mm	inch	mm	inch	bar	psi	bar	psi	kg/m	lbs/ft	m	ft
1435167	25	1"	37	1,46	20	300	60	900	0,60	0,40	120	400
1435060	35	1-3/8"	49	1,93	20	300	60	900	1,00	0,67	120	400
1442791	51	2"	67,5	2,66	20	300	60	900	1,64	1,10	120	400
1456610	65	2-9/16"	85	3,35	20	300	60	900	2,56	1,72	120	400

ABR NIAGARA/40

Code	I.D.		O.D.		Working pressure		Bursting pressure		Weight (nominal)	
	mm	inch	mm	inch	atm	psi	atm	psi	kg/m	lbs/ft
1006789	25	1	38	1 1/2	40	600	120	1800	0,68	0,45
1006800	32	1 1/4	46	1 13/16	40	600	120	1800	0,89	0,59
1006827	35	1 3/8	49	1 15/16	40	600	120	1800	0,95	0,63
1006860	38	1 1/2	54	2 1/8	40	600	120	1800	1,24	0,83
1150723	51	2	68	2 11/16	40	600	120	1800	1,71	1,14

PREMIER SCR 85

code	inside diameter		outside diameter		working pressure		burst pressure		weight nominal		length max	
	mm	inch	mm	inch	bar	psi	bar	psi	kg/m	lbs/ft	m	ft
1900574	51	2	69,5	2,74	85	1275	170	2550	1,813	1,22	120	400
1900575	63,5	2 1/2	85	3,35	85	1275	170	2550	2,547	1,71	120	400
1900559	76	3	102,5	4,04	85	1275	170	2550	3,797	2,55	120	400
2000124	95	3 3/4	121	4,77	85	1275	170	2550	4,386	2,95	120	400
1900560	102	4	128	5,04	85	1275	170	2550	4,748	3,19	120	400
1900561	127	5	154	6,07	85	1275	170	2550	5,946	4,00	120	400

Shotcrete and Concrete Placement Hose

Plaster hose with textile reinforcements.

Standards: Abrasion loss of the tube according to ISO 4649: 90 +/- 5mm³

Application: Soft-wall hose for spraying of shotcrete and plaster.

Temperature Range: From -40°C (-40°F) to +70°C (+159°F).

Tube: Black, smooth, antistatic SBR/NR rubber, abrasion resistant.

Reinforcement: High strength synthetic cord.

Cover: Black, smooth (wrapped finish), antistatic SBR/NR rubber, abrasion-resistant.

Branding: Continuous yellow stripe "(LOGO) PREMIER SCR 85...".

Coils: All Lengths available up to 120m

CONCRETE PUMPING BOOM END HOSE: PREMIER SAFETY HOSE 100 BAR

This hose is used specifically as boom end hose on Truck / Mobile Pumps. It is reinforced with special materials and is designed to be anti-whip. Premier Safety Hose is only available through Premier Pipeline.

Go to our website to see the blockage simulation video:

www.premier-pipeline.co.uk



code	inside diameter		outside diameter		working pressure		burst pressure		weight nominal		vacuum	length	
	mm	inch	mm	inch	bar	psi	bar	psi	kg/m	lbs/ft	bar	m	ft
1456016	100	4	127	5,00	100	1500	200	3000	5,73	3,85	0,8	3	4
1464418	125	5	152	5,99	100	1500	200	3000	6,99	4,70	0,0	3	4

Anti-whip concrete placement

Application: Concrete placement hose; it is used as the boom end placement hose and can be supplied in lengths of 3m/4m. The hose withstands suction under cleaning operations.

Advantage: The hose absorbs shocks and vibrations and prevents the whip effect, making concrete pumping operations safer. Usually supplied with a swaged on "Full flow" hardened coupling AT ONE END ONLY.

Temperature: From -40°C (-40°F) to +70°C (+158°F).

Construction: Tube: Black, smooth, NR/SBR rubber, that withstands the abrasive action of the concrete.

Reinforcement: High strength special plies.

Cover: Black, smooth (wrapped finish), NR/SBR rubber, abrasion and weathering resistant.

Branding: Yellow tape "PREMIER SAFETY HOSE W.P. 100 BAR (1500 PSI) S.F. 2:1 (IVG stripe)".

NEW

CONCRETE PUMPING/PILING HOSE: DELTA HD-X 100 BAR HEAVY DUTY

The benchmark in heavy-duty concrete pumping hose. Developed in 2023, our DELTA HD-X range is the result of years of research and collaboration with our trusted partner, IVG Colbachini S.p.A. Combining the latest rubber compound technology with IVG's superior steel reinforcement system, our DELTA HD-X hoses offer unbeatable resistance to external abrasion and kinking with an unmatched strength-to-weight ratio for easier handling.



Code	Inside diameter		Outside diameter		Working pressure		Burst pressure		Weight nominal		Bending radius		Vacuum	Length max	
	mm	inch	mm	inch	bar	psi	bar	psi	kg/m	lbs/ft	mm	inch	bar	m	ft
1499807	100	4	128	5,04	100	1500	200	3000	7,71	5,18	550	21,7	0,8	60	200
1498975	125	5	153	6,02	100	1500	200	3000	9,41	6,32	700	27,6	0,8	60	200

Concrete placement hose (4 steel plies, 100 BAR W.P.)

Application: Steel wire cord hose designed for piling operations. Also suitable for concrete placement at the discharge location and as a mobile pump boom end hose. Special structure for longer lifespan with excellent anti-abrasive properties. Usually supplied with swaged on "Full flow" hardened coupling fittings.

Temperature: From -40°C (-40°F) to +70°C (+158°F).

Construction: Tube: black, smooth, NR/SBR rubber, that withstands the abrasive action of the concrete

Reinforcement: Plies of steel wire cord.

Cover: Black, smooth (wrapped finish), extra thick NR/SBR rubber, abrasion and weathering resistant.

Branding: Azure/white continuous transfer tape "DELTA HD-X 100 BAR W.P. (1500 PSI) S.F. 2:1...".

Variants available upon request: 1. Red Safety Sleeve: layflat rubber hose to be swaged-on over the "Delta HD-X 100" as containment covering.

CONCRETE PUMPING HOSE: PREMIER 85 BAR

This hose has been designed specifically for mobile concrete pumping operations.



code	inside diameter		outside diameter		working pressure		burst pressure		weight nominal		length max	
	mm	inch	mm	inch	bar	psi	bar	psi	kg/m	lbs/ft	m	ft
1486004	102	4	123	4,85	85	1275	170	2550	5,75	3,86	60	200
1485997	127	5	150	5,91	85	1275	170	2550	7,45	5,01	60	200

Concrete placement hose (4 steel plies, 85 BAR W.P.)

Application: It can be used as a Boom End Placement Hose or Ground Line. The hose resists suction during the cleaning process. Usually supplied with swaged on "Full flow" hardened couplings.

Temperature: From -40°C (-40°F) to +70°C (+158°F).

Construction Tube: Black, smooth, NR/SBR rubber, that withstands the abrasive action of the concrete.

Reinforcement: Plies of steel wire cord.

Cover: Black, smooth (wrapped finish), NR/SBR rubber, abrasion and weathering resistant.

Branding: Continuous yellow tape "Premier 85 BAR W.P. (1275 PSI) S.F. 2:1 (IVG + Stripe)".

RUBBER HOSES FOR YOUR SUSTAINABLE CONSTRUCTION SITE

Sustainability is an essential journey within the industrial world. Comprising of conscious decisions for the environment, people and production systems.

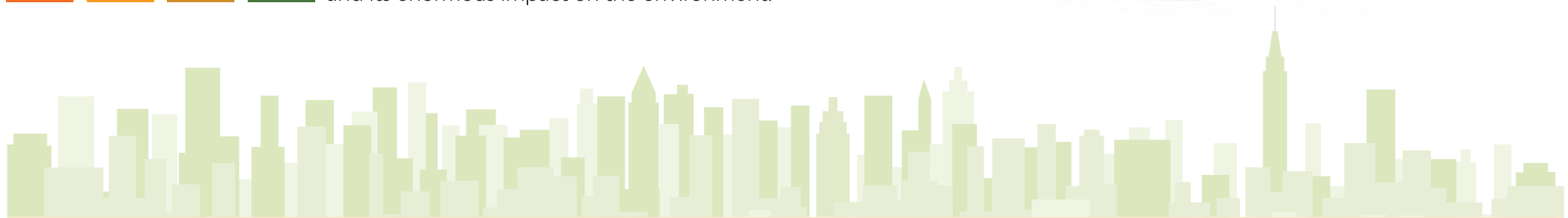
IVG Planet+ is a new range that combines further advantages to those inspired by the principles of a sustainable design already present with IVG Colbachini hoses.

The concept of a new construction site model starts with the identification of products and habits capable of implementing sustainability even during the construction phase. Converting a traditional construction site into a green construction site is finally possible, thanks to the sustainable advantages of IVG Planet+ hoses.

Produced with raw materials from renewable sources, with a percentage of the carbon derived from biobased sources, certified according to ASTM Method D6866.



Of all the SDGs in the UN 2030 Agenda, at least four involve the construction industry, and its enormous impact on the environment:



HOTT GULLFOSS

Application: Softwall hose from renewable sources, for multiple industrial processes, for wastewater treatment and disposal systems, for agricultural uses. It can transport air and water even at high temperatures, slightly acidic or basic fluids, water mixed with various additives. Consult the IVG chemical resistance chart for the behavior with different chemical agents.

Temperature: From -40°C (-40°F) to +120°C (+248°F).

Construction:

Tube: Smooth light brown EPDM rubber. Polymer with 70% of its mass from renewable sources. Excellent resistance to heat and to various slightly acidic or basic aqueous fluids.

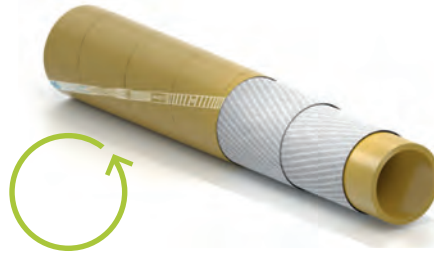
Reinforcement: Highly resistant fabrics with 80% of their mass from renewable sources.

Cover: Smooth (wrapped finish) light brown EPDM rubber. Polymer with 70% of its mass from renewable sources. Heat, weathering, and ozone resistant.

Branding: Continuous white blue stripe "IVG Planet+, Hot Gullfoss...".

Coils: All lengths available up to 120m.

W.P. - B.P.	W.P. 10 bar (150 psi)	B.P. 30 bar (450 psi)
I.D.	from 13 mm (1/2") to 102 mm (4")	
TEMPERATURE	from -40°C (-40°F) to +120°C (+248°F)	



*test performed on 25 x 35mm Diameter

ABR ASPEN

Application: Softwall hose from renewable sources, used for the spraying of concrete, plaster, and gypsum. 57% of the carbon contained in the hose has a biobased origin tested according to ASTM D6866.

Temperature: From -40°C (-40°F) to +70°C (+158°F).

Construction:

Tube: Black, smooth, antistatic SBR/NR rubber, abrasion resistant.

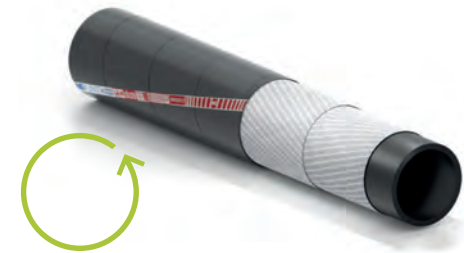
Reinforcement: High strength synthetic cord.

Cover: Black, smooth (wrapped finish), antistatic SBR/NR rubber, abrasion resistant.

Branding: Continuous red, blue and white stripe "IVG Planet+, Sustainable Advantages, Abr Aspen...".

Coils: All lengths available up to 120m.

W.P. - B.P.	W.P. 40 bar (600 psi)	B.P. 120 bar (1800 psi)
I.D.	from 19 mm (3/4") to 152 mm (6")	
TEMPERATURE	from -40°C (-40°F) to +70°C (+158°F)	



*test performed on 51 x 68.5mm Diameter

ABR SOLDEN

Application: Abrasion resistant softwall hose, from renewable sources, used for the delivery of sand or cast steel shot. It is manufactured with an antistatic rubber compound. 50% of the carbon contained in the hose has a biobased origin tested according to ASTM D6866 (test performed on 32x48 mm diameter).

Temperature: From -40°C (-40°F) to +70°C (+158°F).

Construction:

Tube: Black, smooth, antistatic SBR/NR rubber, abrasion resistant.

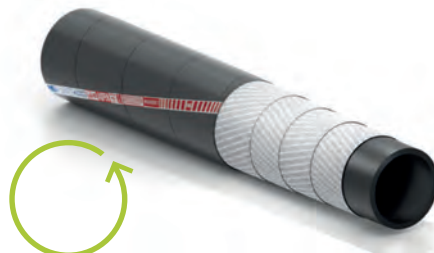
Reinforcement: High strength synthetic cord.

Cover: Black, smooth, (wrapped finish) antistatic SBR/NR rubber, abrasion resistant.

Branding: Continuous red, blue and white stripe "IVG Planet+, Sustainable Advantages, Abr Solden...".

Coils: All lengths available up to 120m.

W.P. - B.P.	W.P. 10 bar (150 psi)	B.P. 30 bar (450 psi)
I.D.	from 13 mm (1/2") to 102 mm (4")	
TEMPERATURE	from -40°C (-40°F) to +70°C (+158°F)	



*test performed on 51 x 68mm Diameter

ABR KEYSTONE

Concrete placement hose (4 steel plies, 100 BAR W.P.)

Application: Steel cord hose from renewable sources, used for conveying of concrete; it can be used for groundline, end of the pipeline for concrete distribution and all applications for piling. The hose resists suction during the cleaning process. Usually supplied with swaged on "Full low" hardened couplings. 42% of the carbon contained in the hose has a biobased origin tested according to ASTM D6866 (test performed on 127x155 mm diameter).

Temperature: From -40°C (-40°F) to +70°C (+158°F).

Construction:

Tube: Black, smooth, NR/SBR rubber, that withstands the abrasive action of the concrete.

Reinforcement: Plies of steel wire cord.

Cover: Black, smooth (wrapped finish) NR/SBR rubber, abrasion and weathering resistant.

Branding: Continuous red, blue and white stripe "IVG Planet+, Sustainable Advantages, Abr Keystone...".

Coils: All lengths available up to 120m.

W.P. - B.P.	W.P. 100 bar (1500 psi)	B.P. 200 bar (3000 psi)
I.D.	from 51 mm (2") to 127 mm (5")	
TEMPERATURE	from -40°C (-40°F) to +70°C (+158°F)	



*test performed on 127 x 155mm Diameter

Hose Protective Coverings

HOSE PROTECTIVE COVERINGS:

PREMIER HD 100 BAR Heavy Duty Hose with Oslo Safety Sleeve

Our Premier HD 100 Heavy Duty concrete pumping hose can be supplied with a protective covering which acts as a containment sleeve during pumping operations.



LAY-FLAT SAFETY HOSE:

ANTI-WHIP

The Lay-Flat Safety Hose is a revolutionary, lightweight hose designed to absorb many of the forces associated with a sudden release of pressure after a line blockage. Easy to handle, this concrete boom hose is ideal for improved flow control, especially when access is restricted.



NEW

HOSE RAMPS

- A moulded polyurethane hose ramp designed to greatly reduce the risk of damage to a hose's reinforcement structure
- Incorporating a single channel designed to fit 1 x 100mm I.D. or 1 x 125mm I.D. hose
- Includes two base channels for securing and/or joining multiple ramps using appropriate fixings
- Bright yellow colour for improved site visibility

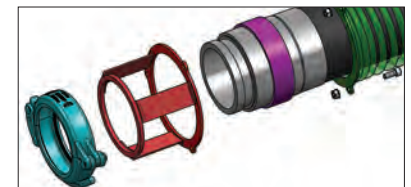
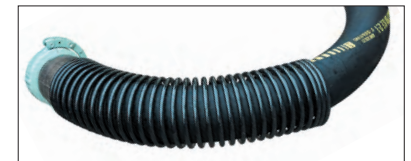


Weight: Dimensions: 740mm x 540mm x 140 mm | Max Load: 44 Tonnes | Weight: 25 kg



Premier Pipeline Anti-Kink Hose Spring

A Premier Pipeline safety innovation, designed to protect the hose from excessive wear and damage from kinking, during piling operations. The hose spring is completely removable.





ST52 Pipes

- Our ST52 pipes are made from high quality, alloy steel, certified by quality production control
- The welding process of the collars is carried out by MIG automatic welding machines to guarantee a perfect fit
- All pipes are anti-rust primed and painted
- Dimensions range from 2" to 8" and calibrated thickness from 2mm to 9.5mm
- Pipe lengths available: 100mm to 6000mm in 4" and 5" single wall and twin wall



Back Elbows:

Reducing elbows cast in manganese or Chrome carbide alloy



Camlock Reducer
100mm-50mm



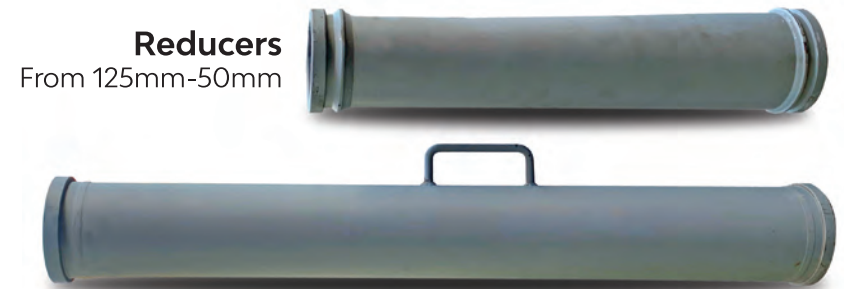
Iron Fist T-Piece
Used with a High Pressure Hydraulic Shut Off Valve



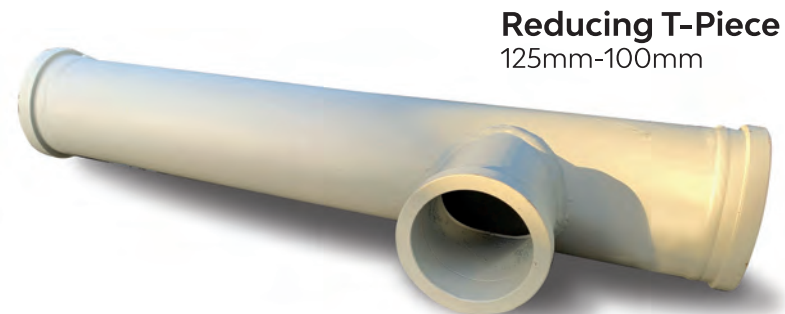
T-Piece
Available in 100mm, 125mm and also a reducing T-Piece from 125mm-100mm



"Y" Flow Deviator Valve



Reducers
From 125mm-50mm



Reducing T-Piece
125mm-100mm

Steel Elbows and Cast Elbows

Raw Elbows in ST52 Steel

- Elbows and related reinforced outer shells
- Different models available from 50mm to 180mm

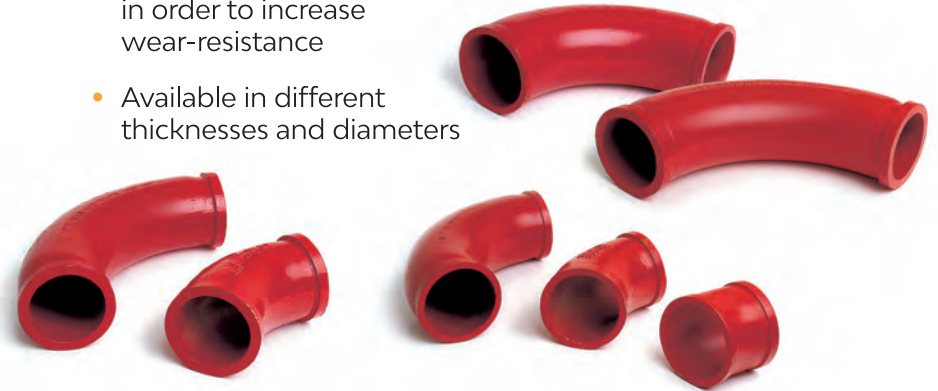


Long Radius Bend Support



Cast-Manganese Elbows

- Manufactured with specific alloy elements including manganese and chrome in order to increase wear-resistance
- Available in different thicknesses and diameters



Special Custom Elbows

- Special manganese alloy versions for booms, manufactured with thicker walls



Large Radius Bends

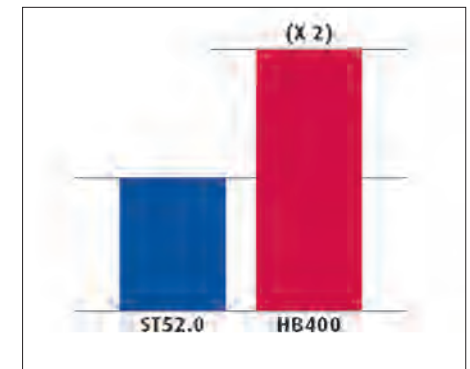
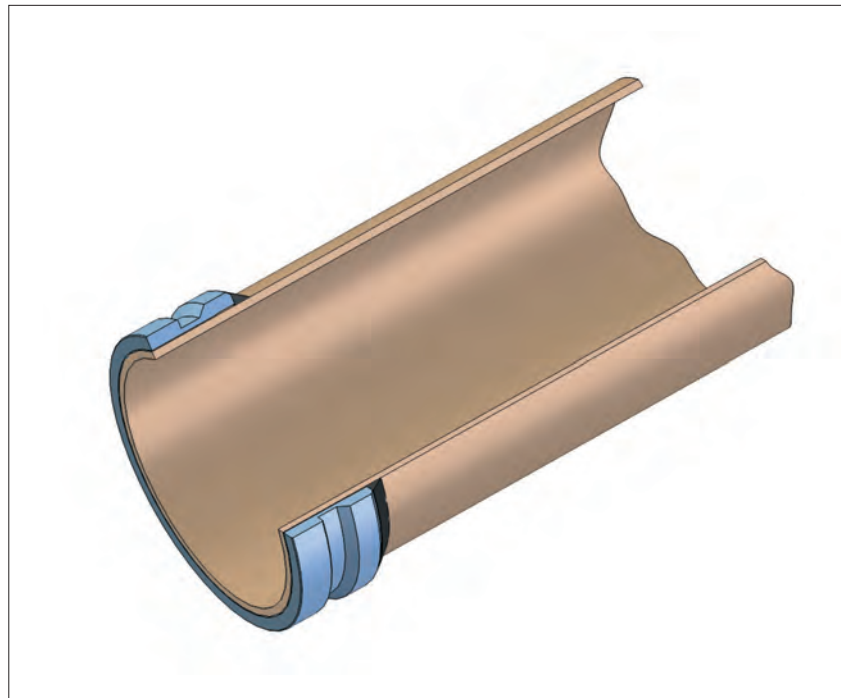
- Radius 1000mm and 500mm



HB400 Delivery Line

HB400 Delivery Line

- The HB400 steel is a single wall, anti-wear pipeline with a double hardness, compared to the ST52
- Easily workable, without specific welding problems
- Weight per meter equivalent to the ST52 pipe
- Available Diameters of 4" and 5" and 4mm thickness



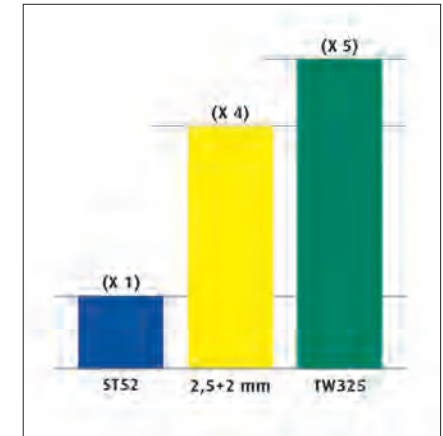
Wearing resistance comparison graphic

Wear Resistant Delivery Lines

Twin Wall, THE BEST double-layered pipe available on the market today

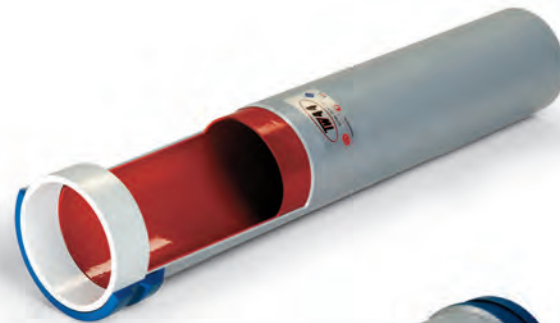
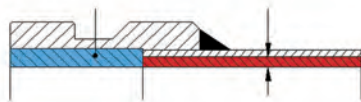
- The Twin Wall is a double layered pipe with an inner wall having a hardness up to 67 HRC, and an outer wall for pressure resistance
- Special double layer collars with (CCI) chrome carbide alloy inserts are placed where the concrete has the highest impact in order to guarantee a longer life span
- Compliant with all Tolerance, Pressure and Safety standards
- Lasts up to 5 times longer than normal ST52
- Reduction in downtime
- Available diameters: 100mm (4") - 112mm (4.4") and 116mm (4.6") - 125mm (5")
- Thickness: 2.5+2mm - 3.25+1.5mm - 5+2mm

Wearing resistance comparison graphic



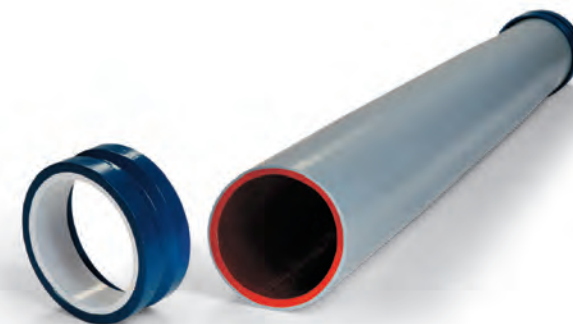
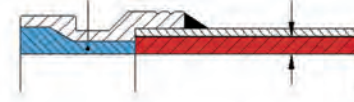
Twin Wall TW275

Tempered Insert in 100 CR6 - Inner Thickness 2.5mm



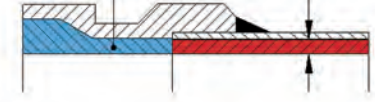
Twin Wall TW325

Chrome Carbide Insert Inner Thickness 3.25mm



Twin Wall TW500

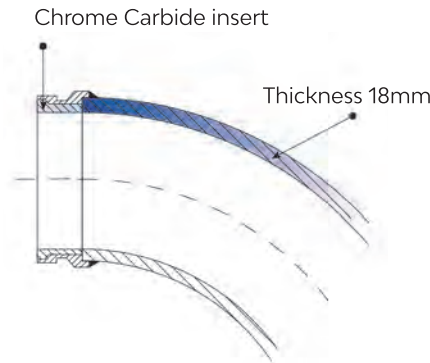
Chrome Carbide Insert Inner Thickness 5mm



Wear Resistant Elbows

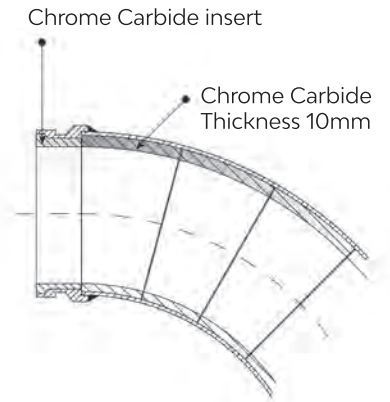
Reinforced Cast Manganese Elbow

- Cast wear-resistant manganese elbow with a thickness of 18mm
- Collar with CCI insert
- Competitively priced and recommended to be placed where the flow of concrete has the highest impact



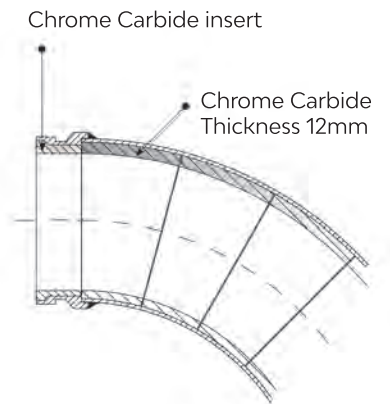
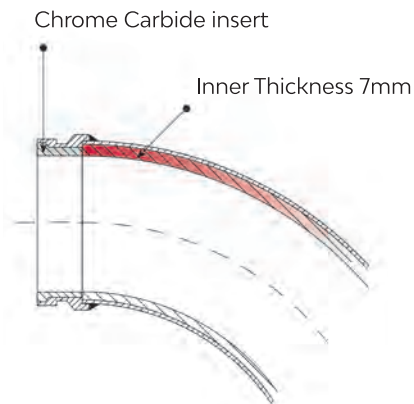
CCI Reinforced Elbow

- Wear resistant inner layer elbow in Chrome Carbide alloy with a thickness of 10mm and an hardness of 68 HRC
- CCI insert rings (68 HRC)
- The best product on the market today



Impact Elbow

- Wear resistant inner layer elbow in Chrome Carbide alloy with a thickness of 12mm and a hardness up to 68 HRC
- Indicated for any point of high abrasion



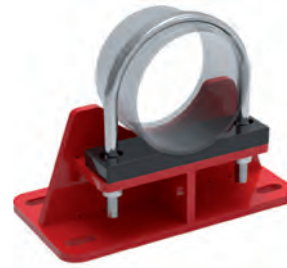
Supports for Pipes and Hoses



STB 350mm Wall Bracket



STB 230mm Wall Bracket



STB 160mm Wall Bracket



Z Wall Bracket



U-Bolt Base
Available in 100mm and 125mm

STT Scaffolding Bracket



U-Bolt Stirrup

Available in 100mm and 125mm



Floor Brackets
Available in 100mm and 125mm



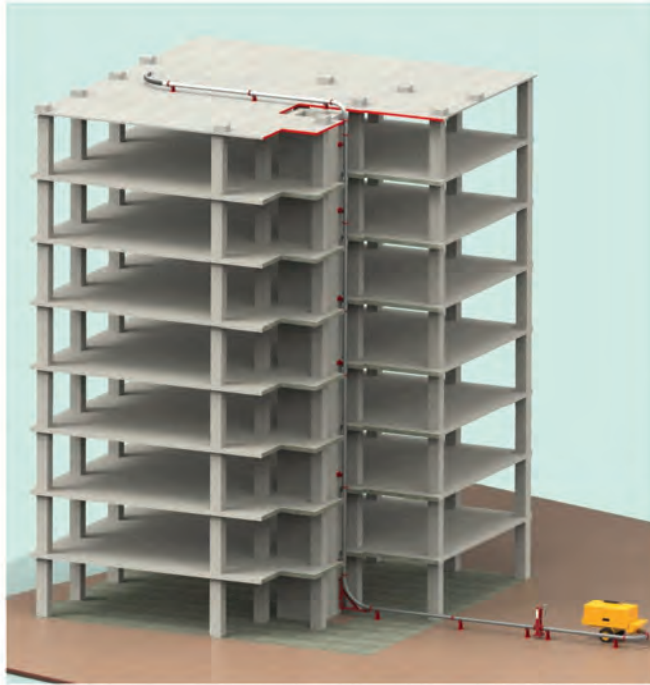
STP Spacer and Floor Bracket



STP Floor Bracket

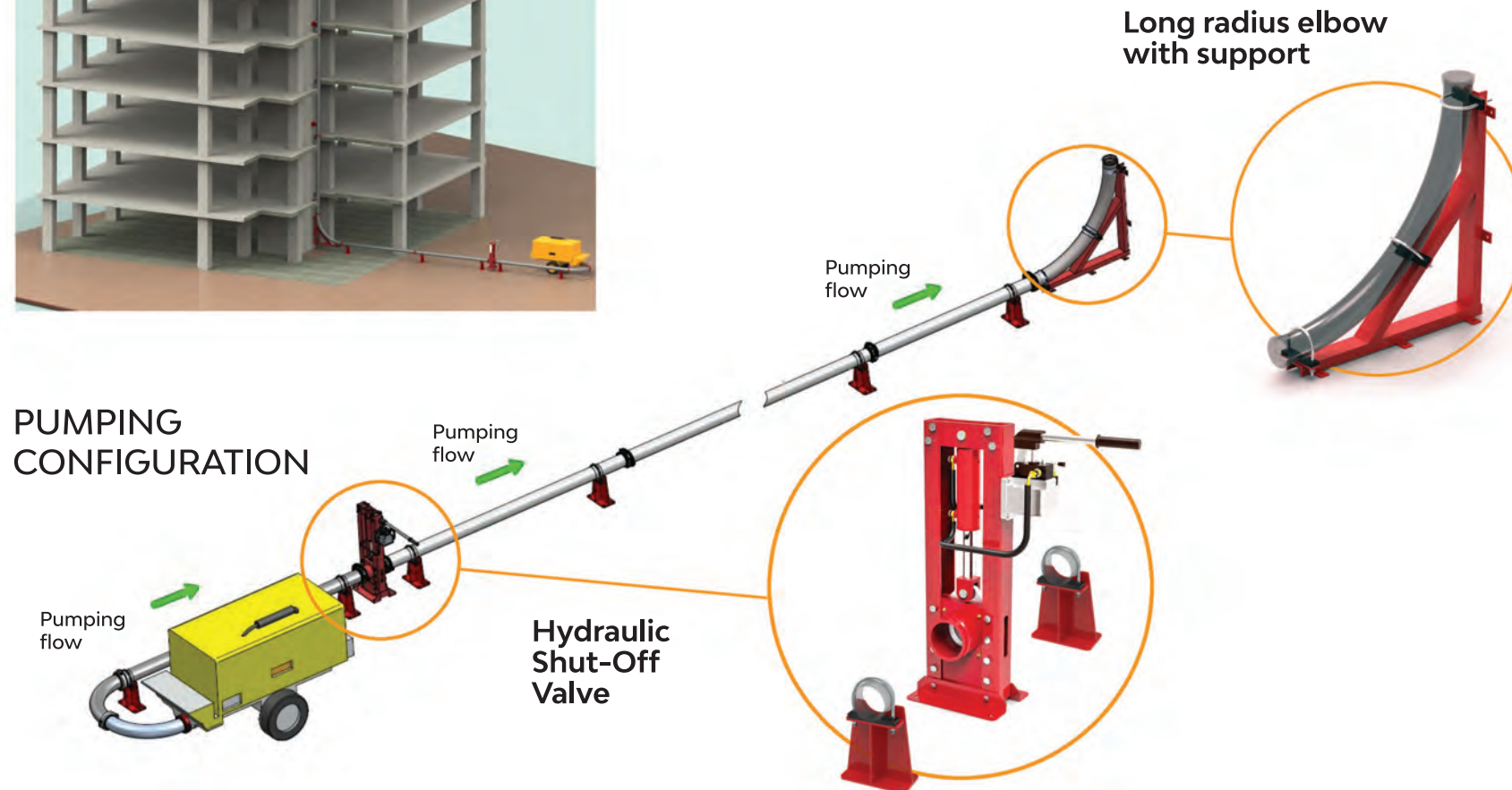
Corner Bracket





At Premier Pipeline we are proud to offer a complete pipeline design system for any construction project, even when accessibility and space are an issue.

We can provide all the correct equipment to ensure that everything runs smoothly and the concrete is delivered in the safest and most efficient manner possible.



Welding Rings and Gaskets

Welding Rings, Gaskets and Spare Parts

We can supply whatever connection you require for your pipeline system, including bespoke combinations.



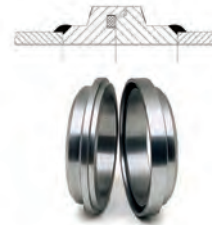
Gaskets:
Standard Version,
Squared-reinforced,
three-lipped-reinforced
and O-rings



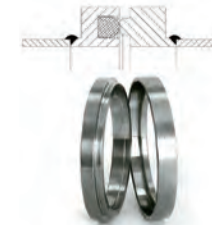
Standard Connection:
Working pressure up to 85 bar.



Connection System:
Special performance self-centred rings enabling fast welding on delivery pipes.



Conical Male and Female Connection:
This conical connection provides a solution adaptable for high-pressure operations up to 200 bar.



Male and Female Connection:
Allows a rigid connection without play, suitable for ground-placed tubes.



Heavy Duty Connection

Auger Bungs, Teeth and Pins



4" Auger Bung 5" Auger Bung



C31 HD Tooth



C31XHD Tooth



B47K XHD Tooth



B47K Tooth



BFZ100 Tooth



18mm dia
Auger Pin



30mm dia
Auger Pin

Nozzles for Shotcreting



MINI Model
Small and
economical



KK Model
The easy-to-use
top for perfect
mixing of air
and additive



KC Model
Compact
and light
model



Long Model
Performance
nozzle with
mechanical
arm support

Couplings, Cleaning Sponges and Accessories

130 Bar Rapid-fit Coupling (Size: 148mm)
Premier Pipeline and Dalcom are proud to introduce our brand-new high-pressure coupling, incorporating enhanced safety features not yet seen in concrete pumping. As the industry's first coupling designed and certified for ID marking/engraving, this safety-driven innovation allows our customers to track and monitor the lifespan of these hugely important accessories. In addition to the standard safety pin securing aperture, this coupling also features a tether point for further peace of mind.



1 Bolt, 2 Bolt and Special Couplings
85 Bar W.P S.F 2:1



Cleaning Cap

Blow-Out Cannon Twin with Gauge
(Sizes: 100mm, 125mm)



NEW

(New Version) Blow-out Cannon, twin exhaust with pressure gauge
(Sizes: 100mm, 125mm)



Catch Basket
(Sizes: 100mm, 125mm)



Rapid-fit Couplings
85-130 Bar W.P S.F 2:1



NEW



NEW

Cleaning Sponge and Rubber Balls
Available in various shapes, sizes and densities (Soft, Medium and Hard)



Hose Support Disc
Complete with Ratchet Straps



DELTA CONCRETE REMOVER
This is our newest and most powerful cleaning product. This biodegradable and non-toxic solution is engineered to carefully break down concrete and cement residues, considerably reducing time and effort spent cleaning concrete pumping equipment, mixers and much more!

DELTA CONSHIELD CONCRETE RELEASE AGENT
100% Biodegradable and environmentally friendly, this non-toxic alternative to diesel helps prevent the adhesion of concrete to equipment surfaces, thereby adding a layer of protection as well as considerably reducing cleaning times. Our concrete release agent is easy to apply, long lasting and has minimal effects on the properties of concrete.

Whip Sock



Whipchecks
(Sizes: 1/2" - 6")



Hook Whipcheck
(Sizes: 1.5" to 3")



Scree Tripod
Available with 88.9mm Victaulic hose fitting or Camlock fitting



R-Clip



Spring Cotter Pin



Split Pin

Screed Strap



NEW

NDT Inline Ground Hose Pressure Sensor



NEW

Hose Support Tripod
For 100mm and 125mm hoses



Ultrasonic Thickness Gauges

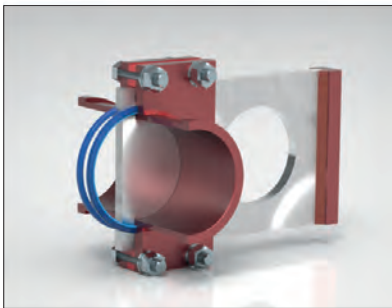
Model SMART

Ultrasonic thickness gauge, non-destructive testing devices are used to measure thickness in ultrasonic conducting mediums. They are commonly employed to determine the thickness of tanks, central parts of large metal sheets, pipelines, pressurised containers, bulkheads, etc. They are most commonly used in quality control activities and maintenance inspections to detect corrosion and abrasion.



Manual Shut Off Valves

The manual shut off valves can be placed along the distribution line to stop the flow of concrete. They are opened and closed manually, and can be supplied with any type of collar.



Model BGU

Manual shut off valve with seal

- Made from steel
- Removable bolts for internal cleaning
- With internal liquid-tight seal
- Supplied with any type of collar



Aircuff

This valve blocks the flow of concrete by means of an internal rubber membrane, operated with compressed air. A simple, lightweight and reliable system.

DLV - Hydraulic Vertical Diverter Valve

DLV - Hydraulic Vertical Diverter Valve

Model DLV - High Pressure

- Switching between two delivery lines
- Maximum delivery pressure 130 Bar (1885 psi)*
- Pipeline diameter 125mm (5")
- Available with all type of collars M-OR-HD-SK-ZX
- Power system available in various options: hand pump, manual distributor with quick-connectors and external electrical power unit
- Also available in horizontal configuration
- Manufactured in accordance to: UNI 12001:2012 (conveying, spraying and placing machines for concrete safety requirements)

* Standard delivery line system rated at max line working pressure of 85 Bar (1,233 psi).



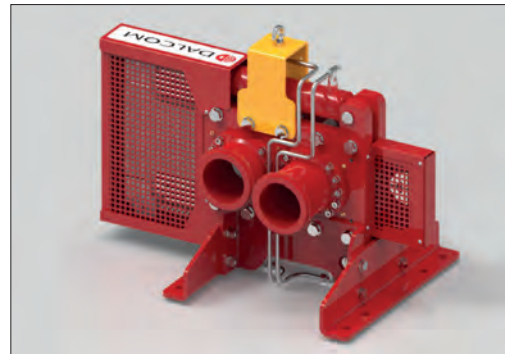
Model	DLV.12H.30.PO.55M
Configuration	Without hydraulic drive
Port /position	3 / 2
Delivery line	125mm (5") / (2+1)
Hydraulic cylinders	2
Approximate weight	180.0 Kg / 396 lb

DLZ - Hydraulic Horizontal Diverter Valve

DLZ - Hydraulic Horizontal High Pressure Diverter Valve

Hydraulic diverter valve 3/2 for high pressure lines. The double hydraulic cylinders allow a fast exchange of concrete flow between two lines. The robust structure is able to absorb water hammer.

In combination with our high pressure shut-off valve it allows for a rapid cleaning of the pipeline in complete safety.



Technical data:	
Working pressure:	130bar
Dimensions	96 x 60 x 69cm
Net Weight:	184 Kg / 406 lbs
Weight with concrete	194 Kg / 427 lbs

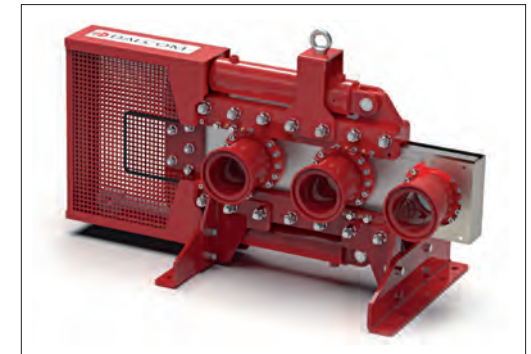
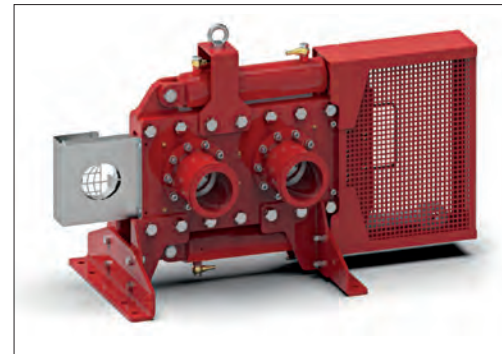
According to the EN12001:2012 "Conveying, spraying and placing machines for concrete and mortar – Safety Requirements"

DLO - Hydraulic Horizontal Diverter Valve

DLO - Hydraulic Horizontal Diverter Valve 5/2

Hydraulic diverter valve for high-pressure lines. With five input/output connections and two positions it allows several configurations of the line. The strong structure withstands water hammering and cancels out the propagation of axial forces due to pumping activities.

It is the ultimate solution for the most complex pumping operations. It allows two pumping lines to be fully managed without interruptions and makes it possible to simultaneously clean one line while pumping with the other.



Technical data:	
Working pressure:	150bar
Dimensions	136 x 60 x 79cm
Net Weight:	294 Kg / 648 lbs
Weight with concrete	294 Kg / 648 lbs

According to the EN12001:2012 "Conveying, spraying and placing machines for concrete and mortar – Safety Requirements"

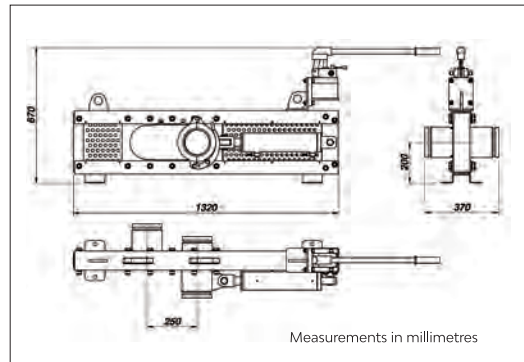
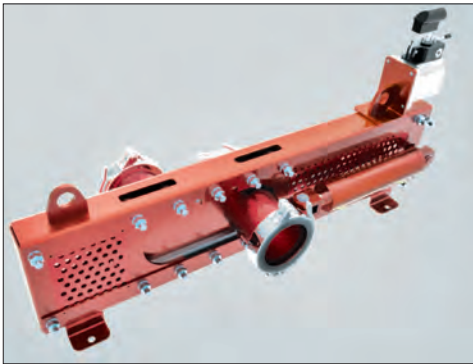
DLI - Manual Hydraulic Horizontal Diverter

DLI - Manual Hydraulic Horizontal Diverter 3/2

- 3/2 DLI- Hydraulic Horizontal Diverter Standard manual hydraulic pump
- Max pressure on concrete 85 Bar

Drive options:

- Standard manual hydraulic pump
- Lever directional control valve (optional for connection with external power unit)
- Mobile hydraulic powerpack (optional)



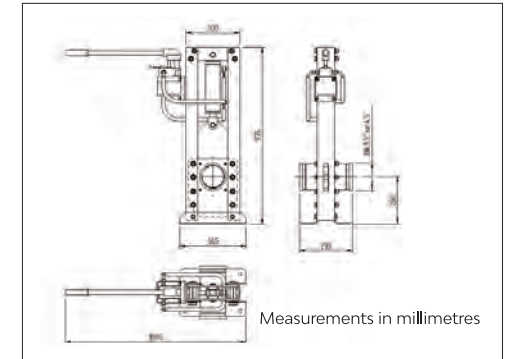
Technical data:	
Working pressure:	85bar
Dimensions	132 x 67 x 32cm
Net Weight:	175 Kg / 386 lbs
Max. Hydraulic Circuit Pressure	220bar
Switching Average Time	40 seconds
Hydraulic Oil	Type ISO 32 Tamk 5kg

According to the EN12001:2012 "Conveying, spraying and placing machines for concrete and mortar – Safety Requirements"

Manual Vertical Hydraulic Shut Off Valve

Manual Vertical Hydraulic Shut Off Valve

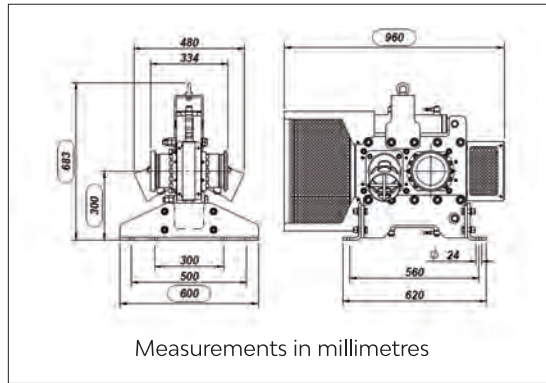
- Standard manual hydraulic pump
- Lever directional control valve (optional for connection with external power unit)
- Mobile hydraulic powerpack (optional)
- Standard Dn.125 and Dn.100 mm with M collar
- Available with all type of collars: OR - HD - SK - ZX



Technical data:	
Working pressure:	85bar
Dimensions	29 x 36 x 97cm
Net Weight:	92 Kg / 202 lbs
Weight with concrete	98 Kg / 218 lbs
Hydraulic Oil	Type ISO 32

According to the EN12001:2012 "Conveying, spraying and placing machines for concrete and mortar – Safety Requirements"

High Pressure Horizontal Hydraulic Shut Off Valve



High Pressure Horizontal Hydraulic Shut Off Valve

2/2 Hydraulic shut-off valve essential for high-pressure lines (high-rise buildings). The double hydraulic cylinders allow the shut-off valve to close firmly. Concrete can no longer bleed, respectively flows backwards. The strong structure absorbs water hammer during pumping.

Drive Options:

- Without controls, for remote operation
- Lever directional control valve (for connection with external hydraulic unit)
- Hydraulic powerpack (upon request)

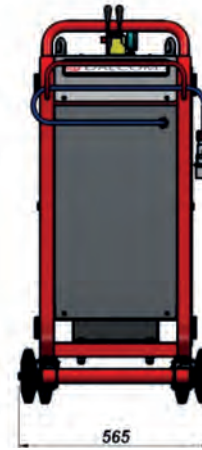
PLUS

- All moving parts are protected by safety grids
- Internal blade cleaning can be done without disassembling the conveyor line

Technical data:	
Working pressure:	130bar
Dimensions	96 x 60 x 68cm
Net Weight:	218 Kg / 480 lbs
Weight with concrete	228 Kg / 502 lbs
Hydraulic Oil	Type ISO 32

According to the EN12001:2012 "Conveying, spraying and placing machines for concrete and mortar – Safety Requirements"

Hydraulic Power Pack



Hydraulic Power Pack

Hydraulic power unit designed to work with shut off and diverter valves reduces time and enhances safety.

Technical details

- 25 litres oil tank
- Double manual lever control valve
- Pressure control gauge
- Quick-lock oil couplings
- Electric panel with emergency push button
- Complete casing with inspecting doors
- CE Standard Compliant



Dimensions:	
Length:	1906mm
Width:	65cm
Height:	1090cm
Net Weight (without oil):	110 Kg / 242 lbs

Delta Washout Bags



Delta Concrete Washout Bag

Bag Characteristics	
Shell	Woven Polypropylene, Fibre
Liner	Polythene, Solid Wall
Thickness	6mm
Volume Capacity	2,300lbs (1,043kg)
Safety Factor	5:1 Safety Ratio

Physical Characteristics	
Length	183cm
Width	110cm
Height	41cm

Delta Open Washout Bag

Bag Characteristics	
Shell	Woven Polypropylene, Fibre
Liner	Polythene, Solid Wall
Thickness	6mm
Volume Capacity	2,600lbs (1,080kg) - 0.68m ³
Safety Factor	5:1 Safety Ratio

Physical Characteristics	
Length	110cm
Width	110cm
Height	51cm



FEATURES - Delta Concrete Washout Bag

- Adheres to environmental regulations
- Strength-tested, tear-resistant woven polypropylene
- Slides under pump hoppers
- Partially-enclosed top keeps material contained during transport
- Small centre opening minimizes spillage
- Chain-stitched waterproof liner prevents liquids from seeping
- Reinforced overlock stitching adds extra strength and structure
- Extra sturdy reinforced poly straps for forklift portability



FEATURES - Delta Open Washout Bag

- Pop-up metal frame keeps sack upright and open while filling
- Tough, tear-resistant woven polypropylene
- Extra sturdy reinforced poly straps wrap around the bottom
- Chain-stitched waterproof liner for liquid containment
- Poly pocket for managing project information
- Strong lift handles for maximum portability



Delta Washout Pan



Delta Washout Pan

Our Delta Pan is designed to offer a robust solution for customers looking to minimise the environmental impact of washout operations whilst offering the opportunity to recycle or responsibly dispose of concrete waste.

These stackable, steel trays can be lifted on and off site using either forks or chains for maximum convenience and flexibility.

Delta Pan Size	Size (Metres)	Capacity		Width (mm)	Length (mm)	Depth (mm)	Dry Weight (kg)
		Tonnes	Max Load (kg)				
Large Pan	1.2m ³	2.2	2,200	1950	1950	317	295

Benefits

- Cost Effective and Reliable
- Minimise Environmental Fines
- Complies with Concrete Washout Guidelines, specified by the Environment Agency
- Watertight Containers and Less Spillage
- Fork Channels and Lifting Eyes for Manoeuvrability
- Quick and Convenient On-Site Clean Up
- Robust Steel Construction
- Small Footprint – Ideal for Confined Spaces
- Blowout Lids available

Hose Re-ending and Testing

HOSE RE-ENDING AND PRESSURE TESTING

We offer a hose re-ending and pressure testing service from our yard.

We can re-end damaged hoses and then re-test them, or we can pressure test them as part of a hose management programme.

We also offer a mobile pressure testing service via our mobile unit.



HOSE ASSET TRACKING SYSTEM

The Asset Management System is the industry's first concrete hose management system. The details of every concrete hose that we deliver, pressure test (see above) or re-end are entered into our database which our customers can access 24 hours a day using the dedicated online portal.

As well as offering full asset traceability, our asset management system advises each client when hoses are due for re-testing, helping our customers plan and coordinate their hose management and logistics with added peace of mind.

The logo for 'prime-a-pump' in a stylized blue font with an orange circle around the 'a'.



PRIME-a-PUMP is the world's leading pump primer, consistently outperforming all other concrete pump primers and additives.

For many concrete pump operators, the worst and most unpleasant part of the job is priming or grouting the pump, involving the mixing of cement powder with water into a paste.

Prime-a-Pump is far superior to any other primer in the industry. Exclusive to **Premier Pipeline**, this market leader is specifically formulated to provide a transparent, odourless, clean and economic alternative to cement / water pump priming and is the only way to get the job done effectively and safely.

Using **Prime-a-Pump** can considerably reduce the chances of skin irritation, dust inhalation and injuries through heavy lifting, making it safer than other existing methods of priming.

Available in: **225g** sachets, **450g** bottles and **18kg** bulk containers.

How to get in touch with us

Head Office:

Premier Pipeline Ltd.
Howe Lane, White Waltham, Maidenhead,
Berkshire, SL6 3JP, United Kingdom.

Telephone: +44 (0)118 934 3999

Fax: +44 (0)118 934 4468

General Enquiries: info@cps-pipeline.co.uk

Sales Enquiries: sales@cps-pipeline.co.uk

premier-pipeline.co.uk



Copyright © 2024 Premier Pipeline Ltd. All rights reserved.



The contents of this brochure does not constitute usage advice.
Premier Pipeline Ltd. reserves the right to change or withdraw information at any time.
Images are for illustrative purposes only, actual specification and size may vary.